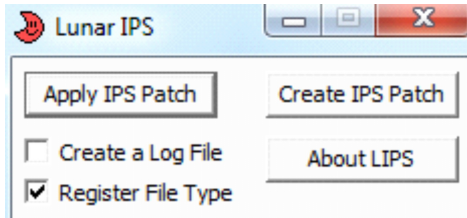


This tutorial requires to use of Lunar IPS by FuSoYa - please download it here:

<http://fusoia.eludevisibility.org/lips/>

1. Extract everything in the RBDX .rar archive.
2. Open Lunar IPS.



3. In Lunar IPS, click apply IPS Patch.
4. Navigate to wherever you extracted the RBDX .rar archive. Once you reach the RBDX folder, click Patches.

Name	Date modified	Type	Size
Documents	12/20/2015 12:11 ...	File folder	
Patches	12/24/2015 12:33 ...	File folder	
Bugs	12/5/2015 6:05 AM	Rich Text Docume...	2 KB
Credits	12/24/2015 12:27 ...	Rich Text Docume...	4 KB
Features	12/5/2015 6:38 AM	Rich Text Docume...	5 KB

5. You will see two folders - Gen 1 Front Sprites and Gen 2 Front Sprites. Click on the folder that best matches which set of sprites you would like to play with.

Name	Date modified	Type	Size
Gen 1 Front Sprites	1/17/2016 11:05 PM	File folder	
Gen 2 Front Sprites	1/17/2016 10:55 PM	File folder	

6. Regardless of the folder you click on, you will see four different folders. The ones you should be paying attention to are the ones labelled 'H#' - these are the different difficulty modes.

Name	Date modified	Type	Size
H1 Normal	1/17/2016 10:30 PM	File folder	
H2 Normal+	1/17/2016 10:30 PM	File folder	
H3 Challenge	1/17/2016 10:30 PM	File folder	
H4 Challenge+	1/17/2016 10:30 PM	File folder	

Normal Mode (H1) keeps the difficulty nearly unchanged from the original game.



Normal Mode+ (H2) disables Shift Mode, the ability to use items in battle, the ability to gain experience for your stats in battles, and the **Lucky Egg** item.

Challenge Mode (H3) raises the "level curve" and changes the rosters of enemy Trainers drastically, much like

Black and White 2's Challenge Mode. It also introduces level scaling on important Trainers, such as **Gym Leaders**, and sets hidden values on opposing Trainer's Pokemon and their intelligence to maximum. **Challenge Mode+ (H4)** also disables Shift Mode, the ability to use items in battle, the ability to gain experience for your stats in battles, and the Lucky Egg item. This is **Red and Blue DX's** hardest difficulty setting. Refer to the **Features** document if you want full context.

Choose the difficulty that you want and open the folder.

7. You will see two patch files, Red and Blue. Click the version that you want.

Name	Date modified	Type	Size
 Blue DX.ips	11/24/2015 2:18 PM	IPS File	597 KB
 Red DX.ips	11/24/2015 2:19 PM	IPS File	597 KB

8. Next, Lunar IPS will bring up another Windows Explorer/Browser window that prompts you to navigate to a ROM. Please select a clean version of Pokémon Red and Blue that matches the version you chose in the previous step.

9. You should get this screen if it was successful. You're done!

